

# 233 SANSOME

*Office Spaces For Lease  
in the Financial District*

233 SANSOME ST  
SAN FRANCISCO, CA 94104

*Exclusively listed by*

JIM WALKER  
415.229.8910  
jim.walker@kidder.com  
LIC N° 01750435

KATE SCHMITZ  
415.229.8905  
kate.schmitz@kidder.com  
LIC N° 01998222

KIDDER.COM



**km** Kidder  
Mathews



CONVENIENT  
LOCATION NEAR  
BART, MUNI &  
STREETCAR



BOUTIQUE  
FLOOR PLATES



OPERABLE  
WINDOWS



24/7 ON-SITE  
SECURITY

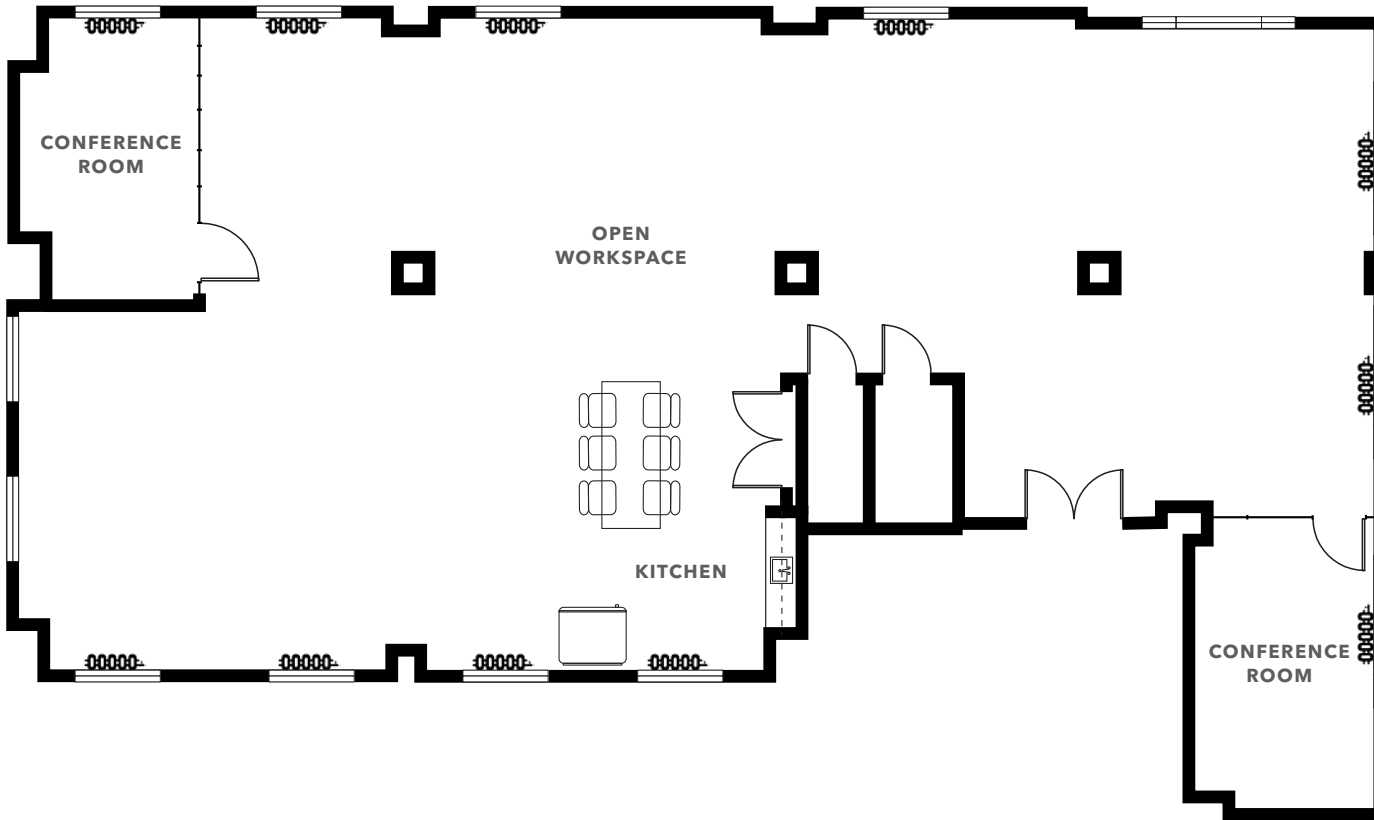




**AVAILABILITY**

Suite #	Total SF	Kitchen	Offices	Conference Room	Open Woke Space	Date Available
SUITE 200	±3,647	Yes	0	2	Yes	Now
SUITE 300	±2,253	Yes	0	1	Yes	Now
SUITE 600	±3,663	Yes	9	1	No	Now
SUITE 900	±3,663	Yes	7	1	Yes	Now
SUITE 1008	±2,736	Yes	1	1	Yes	Now
SUITE 1100	±1,375	Yes	1	0	Yes	Now

# SUITE 200



FLOOR PLAN NOT TO SCALE

*±3,647 SF*

AVAILABLE

*HIGH \$30s*

LEASE RATE (FS)

*NOW*

AVAILABLE

- 2 Conference Rooms
- Open Workspace
- Kitchen

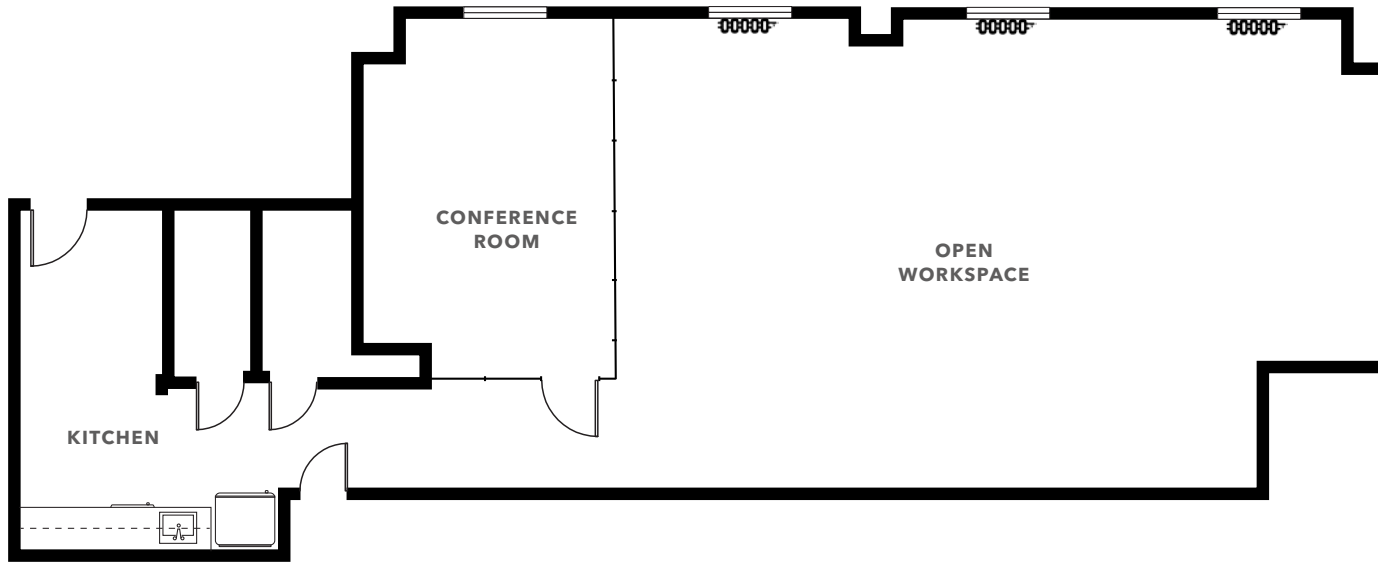




SUITE 200



# SUITE 300



FLOOR PLAN NOT TO SCALE

*±2,253 SF*

AVAILABLE

*HIGH \$30s*

LEASE RATE (FS)

*NOW*

AVAILABLE

Conference Room

Open Workspace

Kitchen

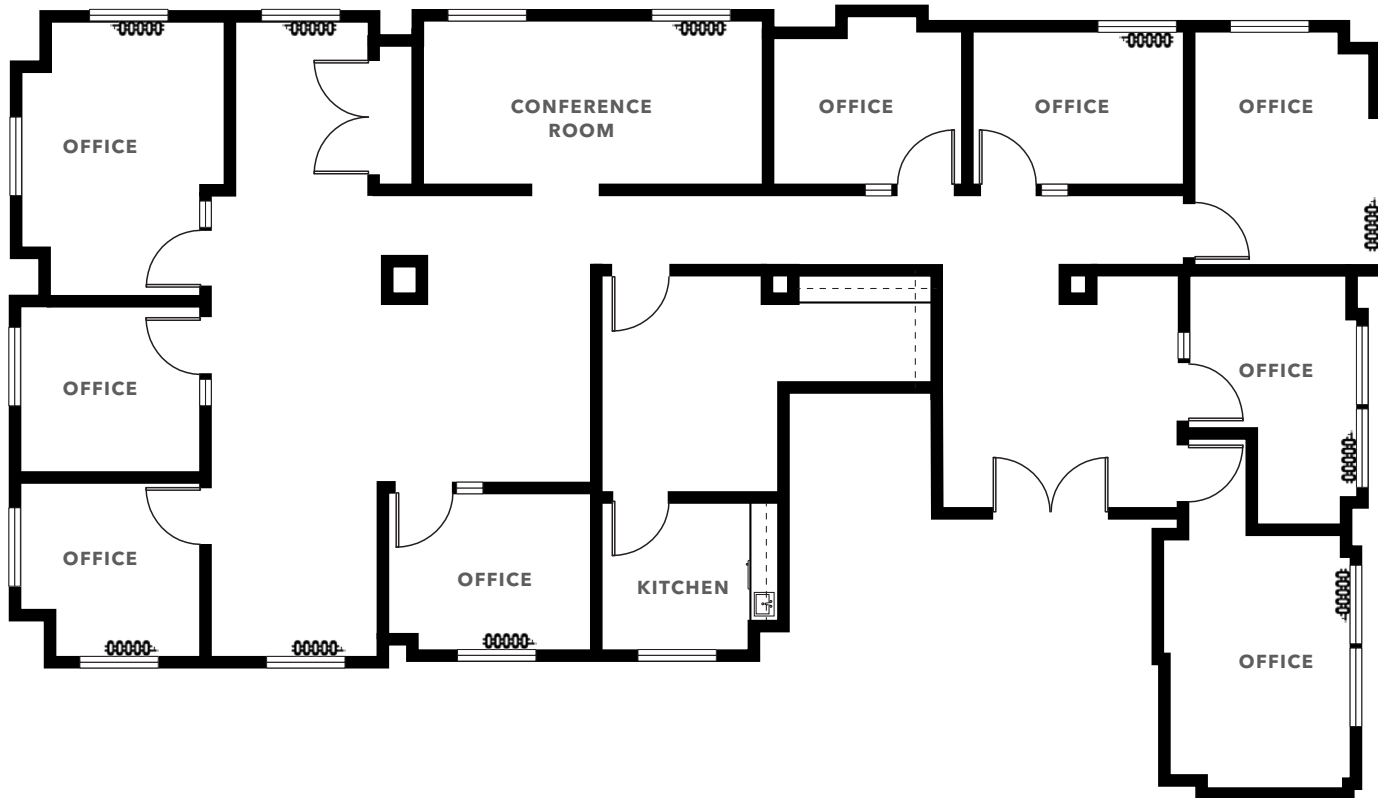




SUITE 300



# SUITE 600



FLOOR PLAN NOT TO SCALE

*±3,663 SF*

AVAILABLE

*HIGH \$30s*

LEASE RATE (FS)

*NOW*

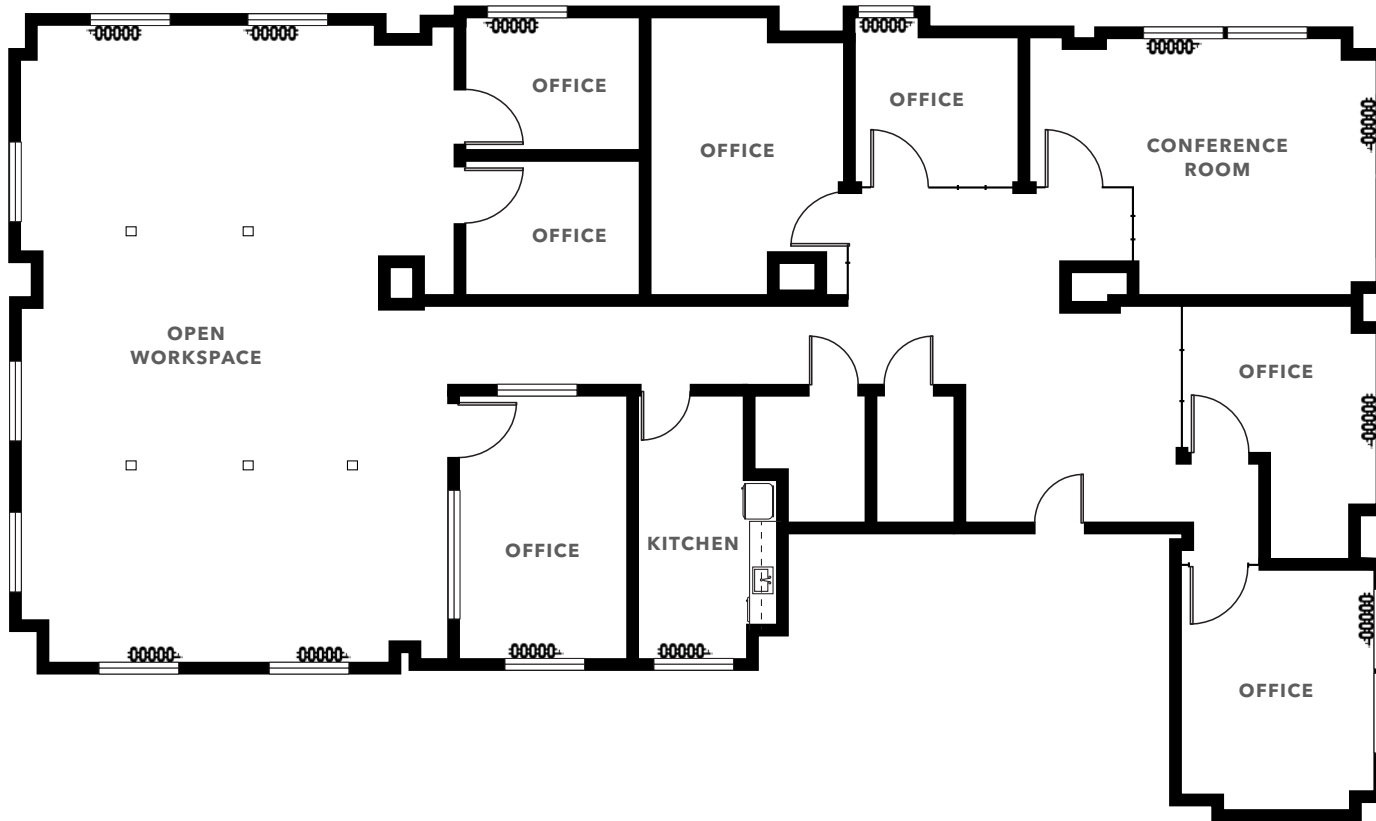
AVAILABLE

- 9 Offices
- 1 Conference Room
- Kitchen





# SUITE 900



FLOOR PLAN NOT TO SCALE

*±3,636 SF*

AVAILABLE

*HIGH \$30s*

LEASE RATE (FS)

*NOW*

AVAILABLE

- 7 Offices
- 1 Conference Rooms
- Open Workspace
- Kitchen

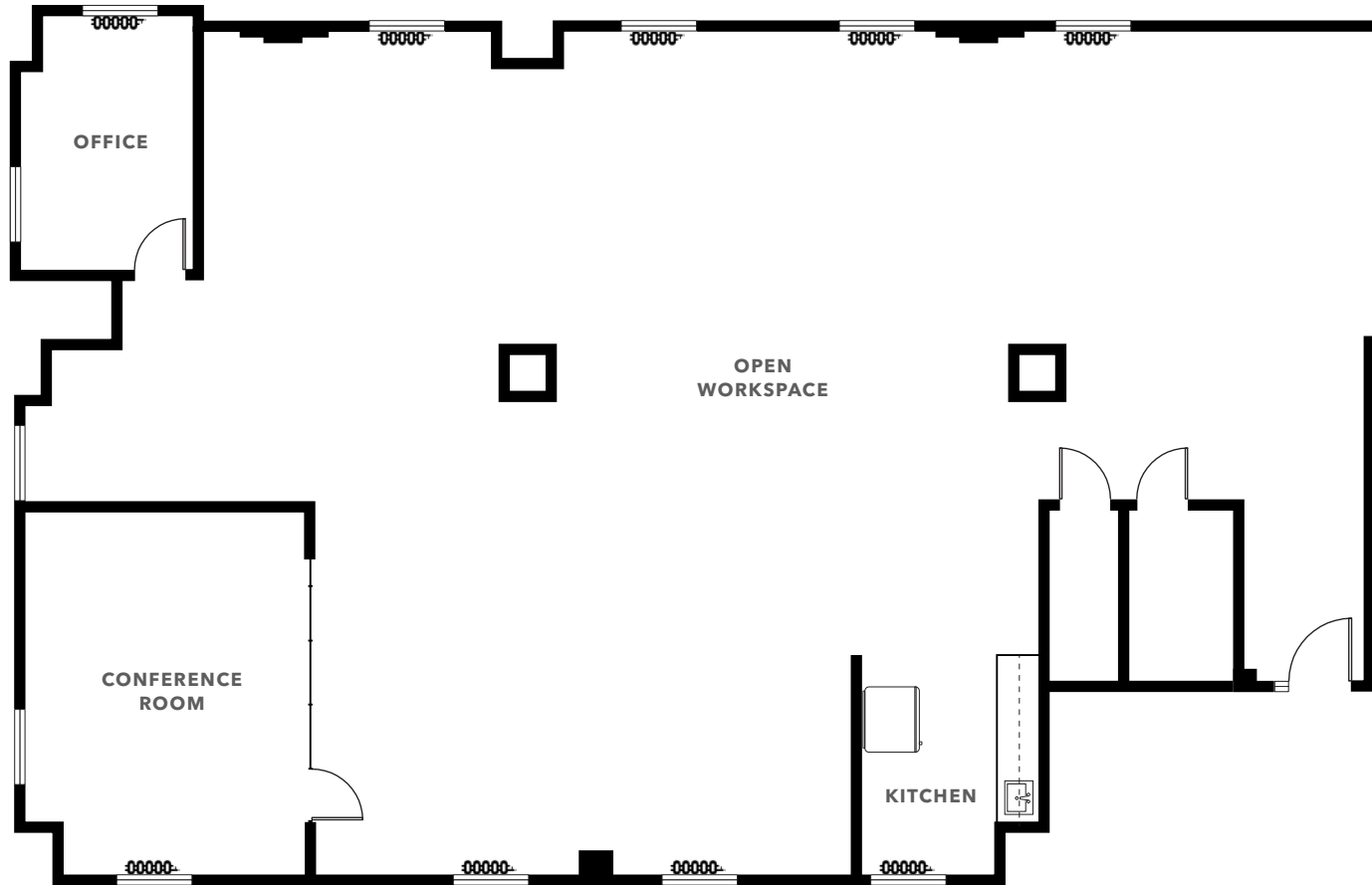




SUITE 900



# SUITE 1008



FLOOR PLAN NOT TO SCALE

*±2,736 SF*

AVAILABLE

*HIGH \$30s*

LEASE RATE (FS)

*NOW*

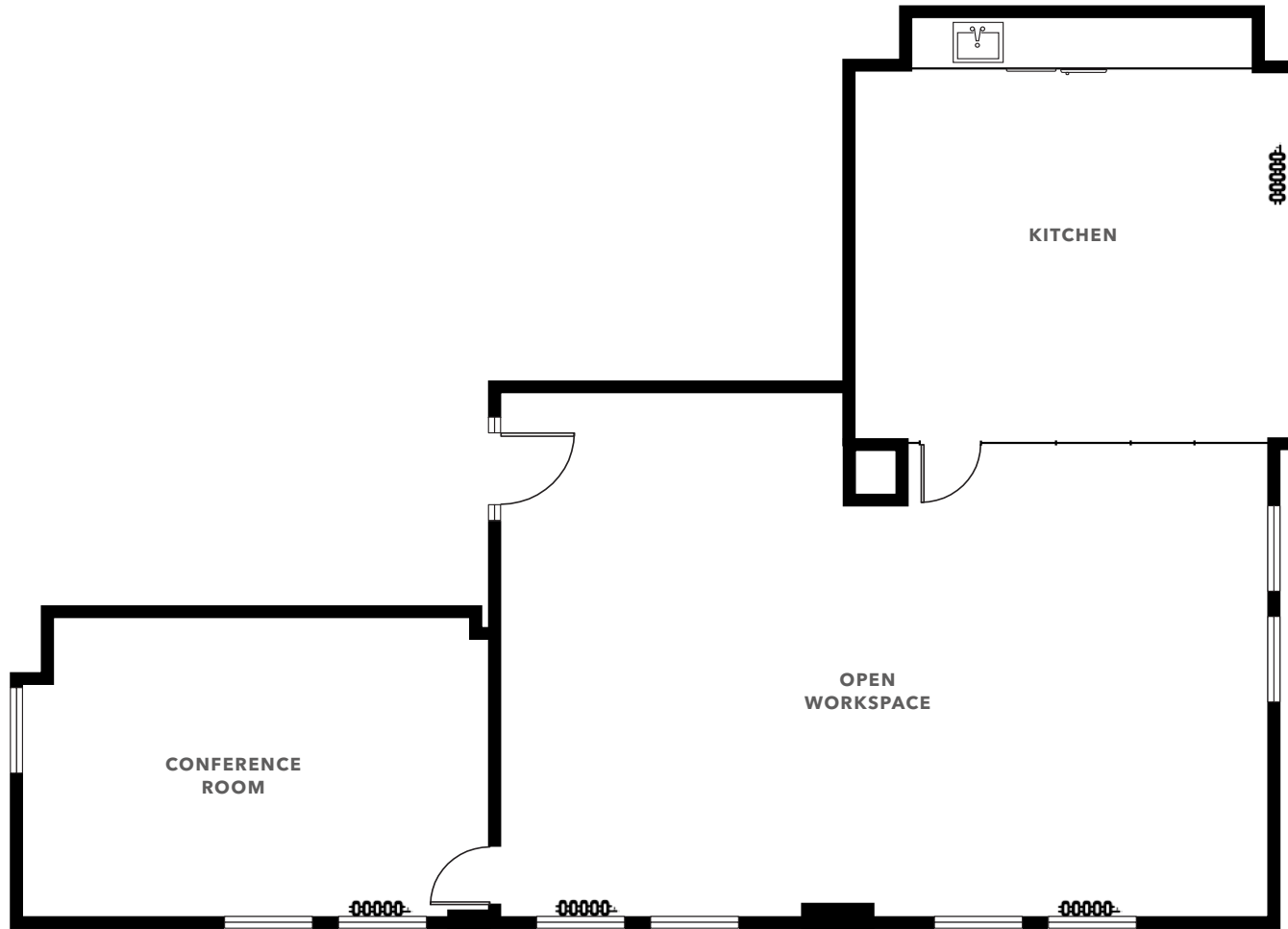
AVAILABLE

- 1 Office
- 1 Conference Room
- Open Workspace
- Kitchen





# SUITE 1100



*±1,375 SF*

AVAILABLE

*HIGH \$30s*

LEASE RATE (FS)

*NOW*

AVAILABLE

- 1 Office
- Open Workspace
- Kitchen



FLOOR PLAN NOT TO SCALE

AVAILABLE FOR LEASE

KIDDER MATHEWS



SUITE 1100





## NEARBY AMENITIES

### RESTAURANTS & BARS

- 01 Wayfare Tavern
- 02 Royal Exchange Restaurant
- 03 La Fusion
- 04 Kokkari
- 05 Barcha
- 06 International Smoke
- 07 Harborview Restaurant & Bar
- 08 Mendocino Farms
- 09 Schroeder's
- 10 Tadich Grill
- 11 Pabu Izakaya
- 12 Paris Baguette
- 13 Credo

### RETAIL

- 01 Safeway
- 02 Aesop
- 03 Allbirds
- 04 Thom Browne
- 05 Isabel Marant
- 06 APC
- 07 Filson
- 08 Walgreens
- 09 Walgreens
- 10 Chase Bank
- 11 Sephora
- 12 UPS
- 13 Fog City Flea Trading Post

### LIFESTYLE & FITNESS

- 01 Barry's - Financial District
- 02 24 Hour Fitness - Montgomery
- 03 Fitness SF - Transbay
- 04 Equinox - Pine Street
- 05 Bodyrok FIDI Studio
- 06 Bay Club - Financial District

### RECREATION & PARKS

- 01 Sue Bierman Park
- 02 St. Mary's Square
- 03 Sydney G. Walton Square
- 04 Salesforce Park
- 05 Wells Fargo Museum
- 06 Rincon Park



*Exclusively listed by*

**JIM WALKER**  
415.229.8910  
jim.walker@kidder.com  
LIC N° 01750435

**KATE SCHMITZ**  
415.229.8905  
kate.schmitz@kidder.com  
LIC N° 01998222

**KIDDER.COM**